



Climate Priorities Plan

A Seven County Coordinated Response to Compete for CPRG in the Sacramento Region

Built Environment

These initiatives will include increasing residential density and infill housing, mandating ENERGY STAR-certified appliances in new and existing buildings, and promoting the use of renewable energy on-site. Decarbonization efforts will prioritize all-electric appliances and eliminate natural gas in new developments. The region will encourage the adoption of electric or hybrid construction equipment, cool pavement installations, and waste reduction measures.

Wastewater emissions will be minimized through methane capture. New partnerships will be formed to establish an edible food recovery program, involving food service establishments, wholesale providers, and retailers to combat food waste.

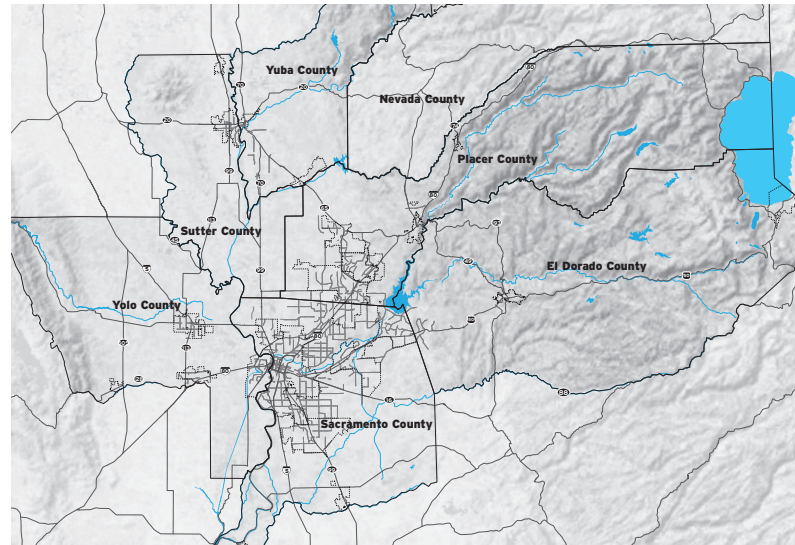
Transportation

Initiatives aimed at widespread adoption of zero-emission vehicles and expanded charging infrastructure, extended public transit coverage, and roadway enhancements to encourage multi-modal transportation. Transportation demand management programs will be implemented through the promotion of ridesharing and by offering discounted transit passes.

The region will prioritize youth mobility with new sidewalks, bike lanes, and safer crossings, along with a school bus program aimed at higher occupancy rates. An electric bikeshare program will also be introduced to boost ridership and reduce emissions further.

Natural & Working Lands

Measures include establishing a wildfire resilience program to address forest fuel treatments. Efforts also focus on increasing tree canopy coverage in urban and natural areas through support for tree planting activities. Initiatives will introduce carbon sequestration measures alongside a new carbon farming program and promote the installation of conventional biomass energy or biofuel electricity generation systems. The region will develop and implement a local GHG offset program and strive for emissions reductions in natural and working lands equipment by transitioning from fossil-fueled to electric versions.



The geography and political landscape of the seven counties covered by this plan led to the selection of a 24 distinct GHG reduction measures in three main domains: **Built Environment, Transportation, and Natural and Working Lands**. These measures play a crucial role in helping the Sacramento Region achieve its emission reduction targets while fostering a more equitable capital region. The plan also yields significant co-benefits of improved air quality, energy and fuel savings, VMT reductions, water conservation, enhanced pedestrian safety, improved public health, improved ecosystem health, enhanced energy security, enhanced food security, and addresses existing social inequities.

Nearly all of the GHG reductions in this plan have significant health co-benefits that manifest on a regional, local, and individual basis. Benefits identified in low-income and disadvantaged communities (LIDAC) were evaluated following the EPA’s CPRG Technical Reference Document for Benefits Analyses.

Implementation of these measures could potentially reduce GHG emissions by approximately 2.6 million MT CO2e per year and move the Sacramento region closer to carbon neutrality by 2030.

| Measure Number | Measure Name | Sector |
|----------------|--|---------------------------|
| Measure BE-1 | Land Use Improvements | Transportation |
| Measure BE-2 | Building Energy Efficiency Improvements | Energy |
| Measure BE-3 | Increase Use Of Renewable Energy In New And Existing Buildings | Energy |
| Measure BE-4 | Building Decarbonization/Electrification | Energy |
| Measure BE-5 | Construction And Landscape Equipment Emissions Reduction | Energy |
| Measure BE-6 | Install Cool Pavement | Energy |
| Measure BE-7 | Reduce Solid Waste | Waste Management |
| Measure BE-8 | Reduce Water Utility Emissions | Water |
| Measure BE-9 | Reduce Wastewater Emissions | Waste Management |
| Measure BE-10 | Require Edible Food Recovery Program Partnerships With Food Generators | Waste Management |
| Measure TR-1 | Zev Adoption And Charging Infrastructure | Transportation |
| Measure TR-2 | Public Transit Improvements | Transportation |
| Measure TR-3 | Provide Bus Rapid Transit | Transportation |
| Measure TR-4 | Roadway Improvements For Multi-Modal Use And Access | Transportation |
| Measure TR-5 | Transportation Demand Management Program | Transportation |
| Measure TR-6 | Active Modes Of Transportation For Youth | Transportation |
| Measure TR-7 | Establish A School Bus Program | Transportation |
| Measure TR-8 | Electric Bikeshare | Transportation |
| Measure NW-1 | Wildfire Resilience And Management | Natural and Working Lands |
| Measure NW-2 | Biomass Energy | Energy |
| Measure NW-3 | Increase Tree Canopy | Natural and Working Lands |
| Measure NW-4 | Carbon Sequestration Program/Carbon Farming | Natural and Working Lands |
| Measure NW-5 | Ghg Local Offset Program | Natural and Working Lands |
| Measure NW-6 | Natural Working Lands Equipment Emissions Reduction | Natural and Working Lands |