



# Community Economic Resilience Fund

## Community Economic Resilience Fund (“CERF”) – Sacramento Region Collective Partnership Agreement Letter: Draft High Road Transition Collaborative Vision and Proposed Governance Structure

*Valley Vision is pursuing the role of Regional Convener and Fiscal Agent for the CERF High Road Transition Collaborative for the Sacramento Region, and will be submitting a Planning Phase application from the region.*

### Our CERF Region

Our CERF-designated Sacramento Region includes eight counties: Colusa, El Dorado, Nevada, Placer, Sacramento, Sutter, Yolo, and Yuba.

### CERF Vision

The Sacramento Region seeks to advance an inclusive, transparent, co-owned, and data-informed planning process to develop an economic plan that will generate high-road jobs and grow a sustainable and equitable economy in the eight-county Sacramento region.

### CERF Values

The following proposed values will guide the CERF process:

- *Equity* - We center marginalized voices in processes and outcomes
- *Inclusivity* - We create an inclusive and culturally diverse table so no community is left behind
- *Transparency* - We openly share information and ideas to build a community of trust & shared understanding
- *Respect* - We respect and acknowledge each other as well as previous and ongoing work
- *Action* - We commit to creating action-oriented goals & timelines and following through
- *Data-Driven* - We prioritize the use of data to drive decision-making, and include the lived experience as an important data contribution
- *Sustainable and Just* - Environmental sustainability and justice are critical components of our vision for economic growth

### CERF Goals

CERF planning phase will result in a diverse High Roads Transition Collaborative (“Collaborative”) with a transparent and representative Governance Structure and an Economic Plan that advances the creation of high-quality jobs, economic competitiveness and resilience, regional equity, and the long-term sustainability of the region. To achieve these deliverables, the planning process will:

- Focus on inclusivity for all regional stakeholders, with special emphasis on historically less engaged stakeholders such as disinvested communities, tribal communities, and workers.
- Build a Collaborative that is representative of the diverse population, geographies, and economy of the region and all its counties.

- Utilize the skills and knowledge of local entities and organizations and ongoing regional processes, including those developed by local governments, workforce training organizations, worker collaboratives, unions, economic development organizations, regional educational institutions, and community-based organizations.
- Recognize unique sub-geographies and create tailored and separate processes as needed.
- Include a robust, multi-channel, and multilingual public outreach plan specifically designed to reach traditionally disinvested workers and communities, and represent the geographic and cultural diversity of the region.
- Result in a regional economic recovery and transition plan that will emphasize job quality and access, economic competitiveness and resilience, regional equity, and the long-term sustainability of the region. The planning process will align with state policies and programs across a broad range of objectives, including the need to advance a climate-resilient and carbon-neutral economy.

## **Proposed Governance Structure**

The Sacramento Region’s Governance Structure will be further developed during the Planning Phase. As envisioned, it would be made up of Collaborative members, Committees (activity-based or strategy-based), and a Leadership Council.

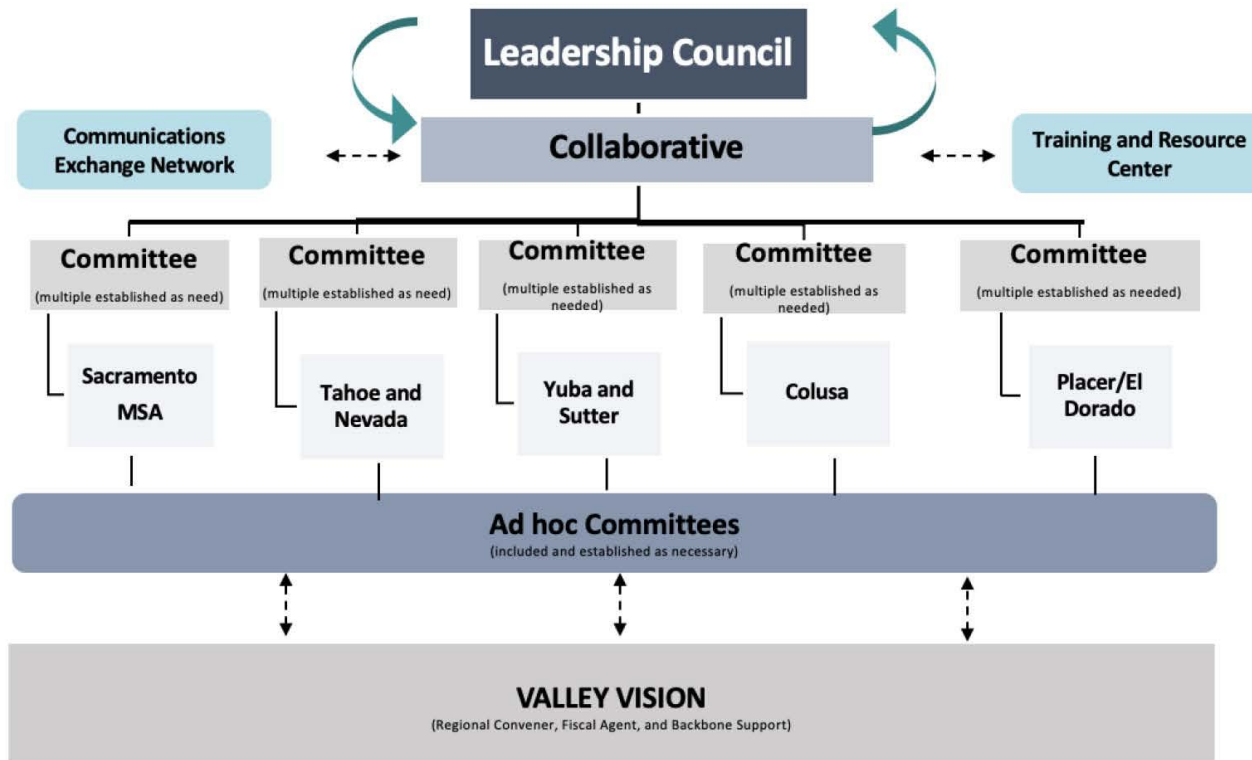
### The Collaborative

As currently envisioned, collaborative membership will:

- Include all who want to participate without a limit to amount of people
- Represent subregions, priority disinvested groups, and other CERF priority stakeholders, including labor organizations; employers, businesses, and business associations; grassroots and community-based organizations, community organizers, and community members; government agencies; economic development agencies; philanthropic organizations; education and training providers; workforce entities; environmental justice organizations; worker centers; disinvested communities; and California Native American Tribes.
- Include representation from aligned regional initiatives, such as the K-16 Educational Collaborative and the Regional Climate Collaborative, to ensure that we align and leverage impact across regional initiatives.

Members have the opportunity to take on additional roles and responsibilities — for instance, by participating for a Committee or seeking to be elected to the Leadership Council

Across all participation categories, there will be opportunities for stipends for participation as well as funded partnerships, details of which will be determined in the Planning Phase.



**PROPOSED ROLES, RESPONSIBILITIES, AND INTEGRATED COMPONENTS**

Component	Role	Responsibility
<b>Leadership Council</b>	<ul style="list-style-type: none"> <li>Decision-making and represented body of the High Roads Transition Collaborative</li> <li>Includes members from the Collaborative and regional committees, and other represented community members</li> <li>Advances recommendations put forth by the Collaborative</li> <li>Serve in a public leadership representative</li> <li>Utilization of a modified consensus model for decision-making</li> <li>Convene in meetings open to public</li> </ul>	<ul style="list-style-type: none"> <li>Drive and inform allocation of Planning Phase funding</li> <li>Establish activity and priority-based committees, with emphasis on disinvested communities to ensure equitable inclusivity</li> <li>Facilitate on-going community outreach, engagement, awareness, and involvement</li> <li>Develop and monitor an implementation effort of the Planning Phase Plan.</li> <li>Work closely with Valley Vision, to provide progress and monthly reports</li> <li>Advise and advance budget approaches and sub-contracting decisions</li> </ul>
<b>Collaborative</b>	<ul style="list-style-type: none"> <li>Engage in input sessions to relevantly inform, shape, and guide the work</li> <li>To put forth recommendations to the Leadership Council</li> <li>Communicate between work of Committees and Collaborative to Leadership Council as a standing agenda item</li> <li>Members may commit to additional roles and responsibilities by serving on a Committee</li> <li>Utilization of a modified consensus model for decision-making</li> <li>Convened and facilitation support provided by the Regional Convener with co-facilitation engagement from Committee Co-Leads</li> </ul>	<ul style="list-style-type: none"> <li>Participate in scheduled input session and review of related materials</li> <li>Coordinate and participate in output gatherings or convenings to engage and involve the community in information sharing, feedback processes, and knowledge building.</li> <li>Establish activity and priority-based subregional committees and ad hoc committees as necessary</li> <li>Inform development of an operating infrastructure for the coordination and alignment of efforts</li> <li>Engage in the review, editing, and final development of a Regional Plan</li> </ul>
<p><b>Communications Exchange Network:</b> Integrated communications and information system practice strategies of transparent, authentically engaging, and meaningful community involvement reflective of the Sacramento Region and sub-regions.</p>		
<p><b>Training and Resource Center:</b> Overseen by the Leadership Council, coordinated and implemented by the Collaborative, the Training and Resource Center connects the partners from across the region in knowledge and capacity-building, relevantly responsive practices, policies, research, and resources aligned to the Community Economic Resiliency Fund program.</p>		
<b>Geographic Committees</b>	<ul style="list-style-type: none"> <li>Representation of regional entities and types of organizations that comprise the Collaborative</li> <li>Formulate and advance action in key activities or strategies of the Collaborative</li> <li>Utilization of discussion and consensus model for decision-making</li> <li>Elected Co-Leads to serve as facilitators of Committee meetings and assist in the coordination of meetings with support provided by the Regional Convener</li> </ul>	<ul style="list-style-type: none"> <li>Set goals, develop a framework, and detail efforts to advance actions with guided input and direction from the Collaborative</li> <li>Participate in sector-based or strategy priorities preliminary identified by the Collaborative</li> <li>In-depth exploration and enhancements of respective strategies with additional support guided by data, research, and evaluation, capacity building, and community engagement to assist in moving forward strategies</li> </ul>
<b>Ad hoc Committees</b> (Time Limited)	<ul style="list-style-type: none"> <li>Representation of regional entities and types of organizations that comprise the Collaborative and existing Committees</li> <li>Established in response to clearly defined need determined by the Collaborative or existing Committees</li> </ul>	<ul style="list-style-type: none"> <li>Completion of specified task, activity, or action as aligned to efforts of existing Committees and intended overall efforts of the Collaborative</li> <li>Close collaborative engagement and communications with existing Committees as appropriate and directly the Collaborative</li> </ul>
<b>Valley Vision</b>	<ul style="list-style-type: none"> <li>Regional Convener and Fiscal Agent</li> <li>Backbone support to Leadership Council, Collaborative and Committees</li> <li>Coordinate and convene Leadership Council and Collaborative</li> <li>Coordinate and assist in the outreach, recruitment and onboarding of members to the Leadership Council, Collaborative, and Committees</li> </ul>	<ul style="list-style-type: none"> <li>Preparation of progress and monthly reports</li> <li>Serve as an intermediary of inclusive information exchange, maintaining communication to support cross-sector network collaboration Committees, Collaborative, and Leadership Council</li> </ul>