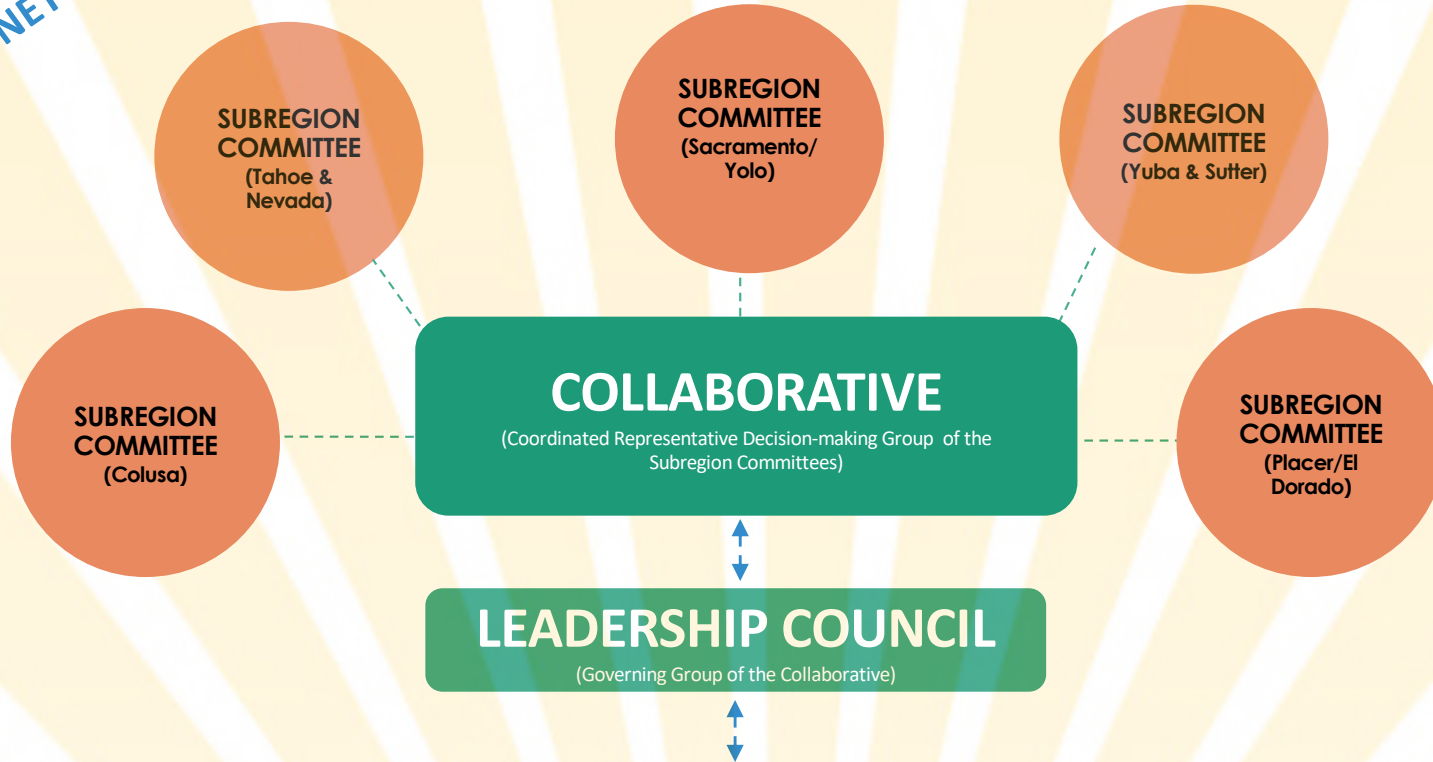


CAPITAL REGION

Community Economic Resilience Fund STRUCTURE

COMMUNICATIONS
EXCHANGE NETWORK

TRAINING, RESEARCH,
& RESOURCE CENTER



VALLEY VISION

(Regional Convener, Fiscal Agent, and Backbone Support to Overall Structural Components)

SHARED VISION: To develop an equity-based low-carbon economic plan through an inclusive, transparent, co-owned, and subregional data-informed planning process in the Capital region. The plan will produce strategies to generate high-quality jobs, clear pathways into new jobs for historically left out populations, and a sustainable and equitable economy in the eight-county region.

SHARED VALUES

OUR PROCESS IS INCLUSIVE WHEN we actively involve divergent voices and those often least engaged in the subregions of the Capital Region through accessible opportunities in the decision-making process with influence that valued, appreciated, and encouraged.

OUR OUTCOMES ARE EQUITABLE WHEN our plans, shown through data, creates economic prosperity in historically disinvested communities and populations throughout the Capital Region.

Note: An ad hoc committee may be established as necessary by any group within the Capital Region operating structure for a clearly defined purpose, task, and objective with a determined timeframe.