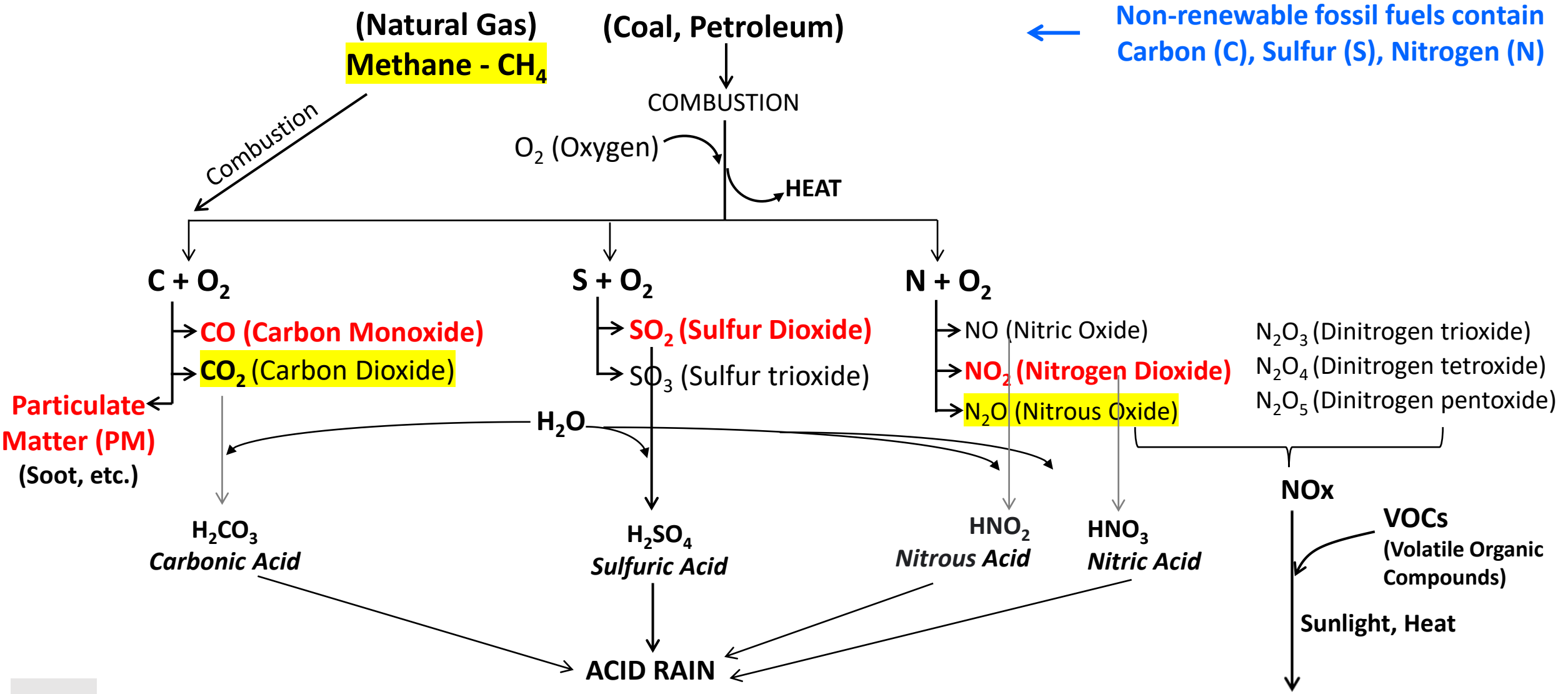


# Valley Vision

November 11, 2022

POLICY POSITION on NATIONAL AMBIENT AIR QUALITY  
STANDARDS (NAAQS)

# Criteria Air Pollutants (CAPs) & Greenhouse Gases (GHGs) From Burning Fuels



CAP  
GHG

# Criteria Air Pollutant Emission Sources

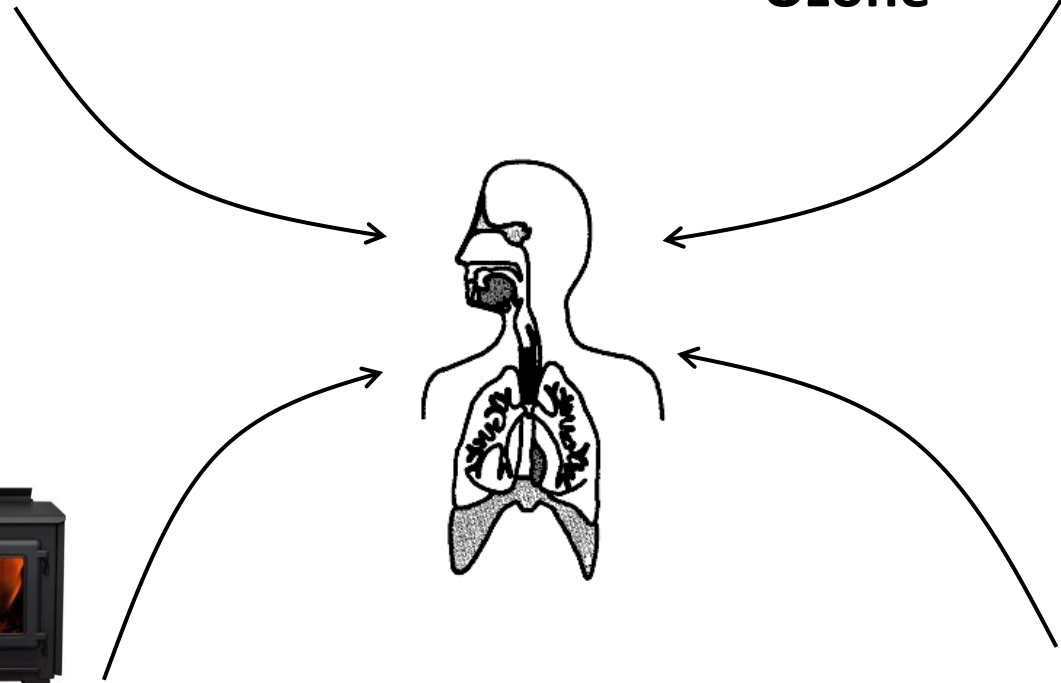
STATIONARY SOURCES



Fine Particulate Matter  
(PM<sub>2.5</sub>)

NO<sub>x</sub>

Ozone



MOBILE SOURCES



# Health Impacts of PM<sub>2.5</sub> & Ozone Exposure

**Particle Matter** can be deadly even at very low levels.  
Particles of all sizes are harmful to health when inhaled.

**Morbidities:**

- Respiratory: eye, throat, and airway irritation; breathing trouble from lung damage; asthma attacks; lung cancer
- Cardiovascular: increased risk of heart attacks and strokes  
*increased hospital admissions and emergency room visits for the above*
- Neurological: cognitive decline such as dementia
- Developmental: adverse pregnancy and birth outcomes, such as preterm birth, low birth weight

**Mortality:**

- increased mortality of elderly, infants, and fetuses

**Ozone** is a powerful oxidant (like household bleach) & can kill living cells on contact – can cause “sunburn” of the lung

**Morbidities:**

- Respiratory: shortness of breath; coughing; chest tightness; worsening of asthma & COPD requiring emergency treatment
- Cardiovascular:
- Immunological: increased allergic response; increased susceptibility to respiratory infections (e.g. pneumonia)
- Physiological: increased risk of metabolic disorders (e.g. diabetes)
- Developmental: increased likelihood of reproductive & developmental harm
- Neurological: adverse impacts on central nervous system

**Mortality:**

- increased risk of premature death

**Vulnerable populations:**

- |                                      |                                      |                                |
|--------------------------------------|--------------------------------------|--------------------------------|
| Children                             | People 65 year and older             | Pregnant women & their fetuses |
| People of color                      | People with low income               |                                |
| People with pre-existing morbidities | People who work or exercise outdoors |                                |

# CAPs Currently in NAAQS Review Process

Criteria Air Pollutant	Averaging Time Period	Level / Concentration	Form
Fine Particulate Matter (PM <sub>2.5</sub> )	24 hours	35 <b>(25)</b> µg/m <sup>3</sup> (1° & 2°)	98 <sup>th</sup> <b>(99<sup>th</sup>)</b> percentile, averaged over 3 years
	1 year	12 <b>(8)</b> µg/m <sup>3</sup> (1°); 15 µg/m <sup>3</sup> (2°)	Annual mean averaged over 3 years
Ozone (O <sub>3</sub> )	8 hours	70 <b>(60)</b> ppb (1° & 2°)	Annual fourth-highest daily maximum 8-hour concentration, averaged over 3 years
Nitrogen Dioxide (NO <sub>2</sub> )	1 hour	100 ppb (1°)	98 <sup>th</sup> percentile of 1-hour daily maximum concentrations, averaged over 3 years
	1 year	53 ppb (1° & 2°)	Annual arithmetic Mean

At OMB

At CASAC

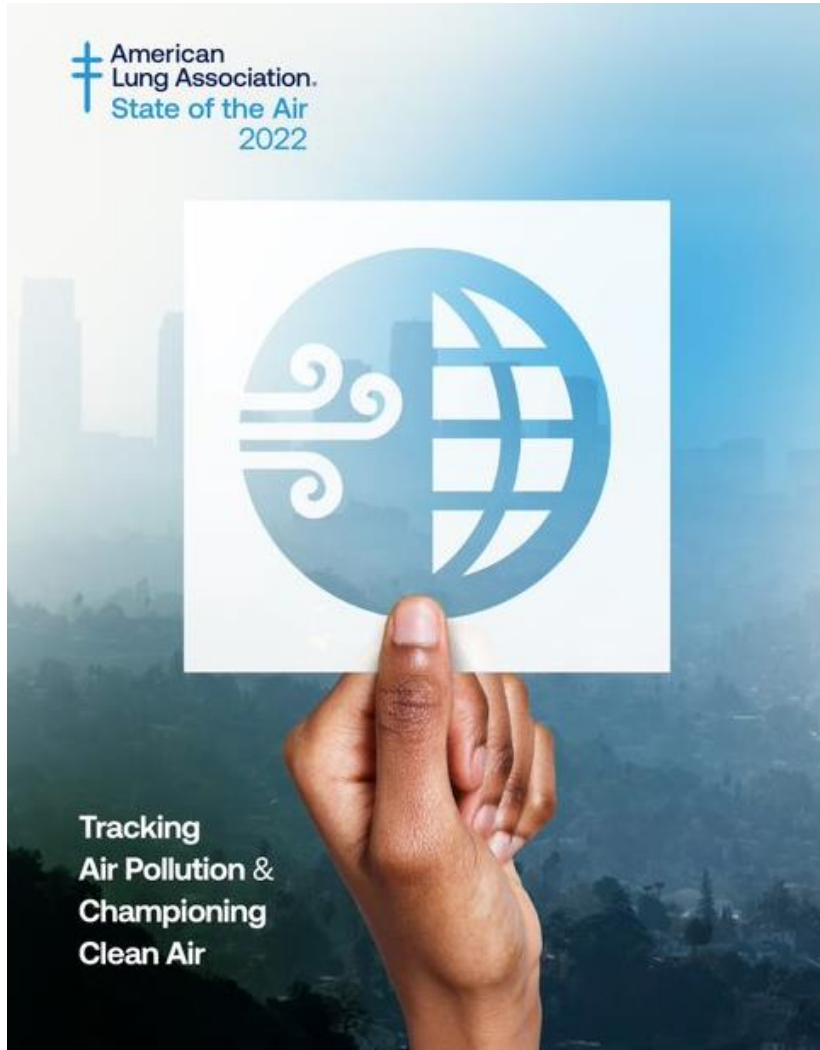
Still at EPA - Soon to Start



# Lung Association Advocacy around NAAQS

- Long history of Lung Association advocacy in support of fully implementing and enforcing the Clean Air Act, including stronger NAAQS
- Our work is science-based, and we advocate for stronger NAAQS when the science shows it's necessary to protect lung health
- We sued over the previous administration's decision not to update the standards, and petitioned EPA to reconsider
- Currently engaged in every part of the fine PM (PM<sub>2.5</sub>) NAAQS reconsideration
- Work in coalition with public health and medical organizations
- We submitted detailed technical comments, provided oral testimonies at every opportunity, recruit additional health experts and people with personal stories of health impacts to provide testimony
- Educate and engage the public, including with factsheets, blogs and public petition
- Hold interviews with media and do outreach on social media
- Meet with White House Office of Management and Budget

# “State of the Air” - Our 23<sup>rd</sup> Annual Report



- California Cities Dominate Most Polluted Lists
  - Ozone: 6 on top 10
  - 24-Hour PM: 8 on top 10
  - Annual PM: 7 on top 10
- Sacramento-Roseville top 10 for ozone and 24-hour PM

# Ozone State Implementation Plan (SIP)

Approved September 2022

## Advanced Clean Fleets

3<sup>rd</sup> largest NOx reduction

Zero Emission Trucks  
Fleets and Sales Targets

## Zero-Emission Trucks Measure

Phase-Out Old and High  
Emitter Trucks +  
Transition to Zero Emission

## Locomotives

#1 largest NOx reduction

Clean Up +  
Transition to Zero Emissions



# Questions and Contacts

## American Lung Association Team

[Shyamala.Rajan@lung.org](mailto:Shyamala.Rajan@lung.org)

[Mariela.Ruacho@Lung.org](mailto:Mariela.Ruacho@Lung.org)